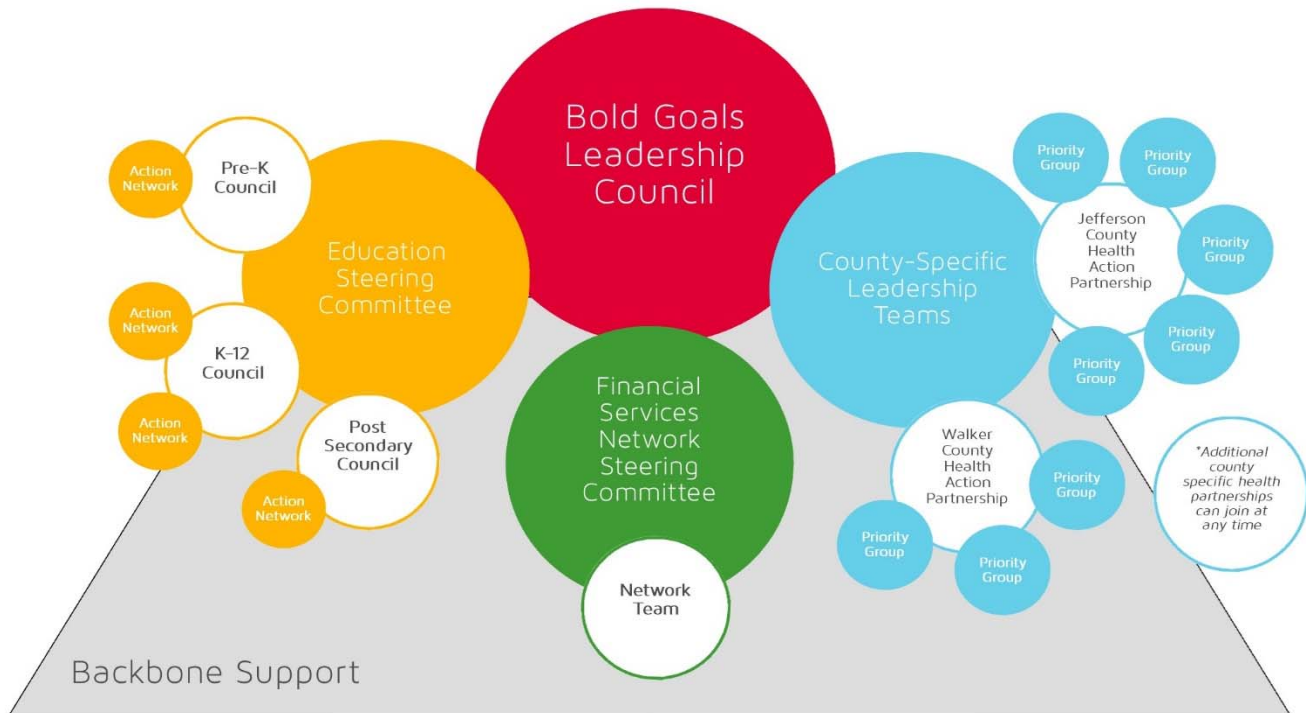


COALITION STRUCTURE

The Coalition follows a Collective Impact model – an approach which brings together different sectors for a common agenda to solve large, complex problems. BGCCA focuses specifically on the areas of Education, Financial Stability, and Health. Over the past few years, the coalition’s structure has evolved to further meet the needs of the Central Alabama community. While each impact area is structured differently, the goal is the same. The organizational chart below, along with the key terms, is presented as an aid for navigating our current work.



Leadership Council: A dedicated group of CEOs, top administrators, and public officials who provide overall guidance and oversight of the Coalition.

Steering Committee/Leadership Team: A group of influential leaders responsible for the overall vision, mission, and strategy for their respective impact area or partnership.

Action Networks/Priority Groups/Network Teams: Smaller working groups formed around key metrics to define and execute ground-level strategies.

Health Action Partnership: A county-specific coalition of local organizations working together to make Central Alabama a healthier place to live, learn, work, and play.

Financial Stability Network: An collaborative network of financial service providers committed to sharing consistent measurements to move low-income households from crisis to financial stability. The Network is led by a **Steering Committee**, with the data collection and coordination performed by the **Network Team**.

Backbone Organization: A dedicated, independent staff providing ongoing support by driving the Coalition’s vision and strategy, supporting aligned activities, establishing shared measurement practices, building public will, advancing policy, and mobilizing resources. **United Way of Central Alabama** services as the Coalition’s backbone support.

Lead Organization: An organization dedicated to taking the lead to further the work of a specific project, Action Network, Priority Group, or Network Team